

PARISH NEWSLETTER

May 2015

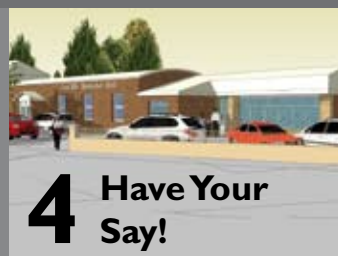
The Future of the Memorial Hall – Public Consultation



The Council needs your views on the long term future of the Memorial Hall. This facility is no longer fit for purpose, and needs major work if it is to continue to serve the community in the future. We are keen to ensure this facility should not be lost. However difficult decisions have to be made to preserve and enhance the building. Replacing the building with a new facility appears to be too expensive as does a total renovation of the entire building.

After much deliberation the Parish Council's preferred option is to renovate the main part of the hall, together with the existing meeting room, whilst demolishing the unused parts. However as this is your facility we are asking residents to take part in a public consultation. Please see the Memorial Hall article herein and provide your comments either by completing the online survey or returning the survey on the back page to the hall address Catcliffe Memorial Hall, Old School Lane, Catcliffe S60 5SP.

Inside this issue:



Friends of Catcliffe

The group held their first AGM at the Red Lion. The Chairman, Pete DeVeaux, welcomed Gavin Shawcroft from Rotherfed and Councillor Andrew Roddison to the meeting and thanked both for their support in the setting up of the group.

He then reported on slow but encouraging progress and the success of a number of projects during the year. He thanked all volunteers who had given their help freely in completing these. Treasurer Andy Cater presented a healthy balance sheet with the result that funds were available to carry on the good work already started. The group had received generous sponsorship for their projects and thanks were given to all donors. The Chairman, Treasurer and Secretary, Glenys Cooper, were returned unopposed as officers for the new term. More pleasing was the addition of 9 members to the committee and the group are now looking forward to an even more successful year.

After the AGM, there was a



social evening including a quiz night and refreshments provided by the Red Lion.

The Easter Eggstravaganza was a great day. Rev Helen Bent presented prizes for the Easter Bonnet parade which proved very popular for the children. Sack races, Egg and Spoon races and Toss the Carrot also proved to be big draws and the Easter Egg prize basket soon emptied. All refreshments, including hot dogs, were provided free of charge and a good time was had by all. Everyone on the committee worked hard but special thanks went to Louise

Tideswell and Jack Cater for organising the activities.

Recent projects for the group included another churchyard clean up on the 16th May in co-operation with St Mary's. Thanks are given to all the volunteers who helped on the day.

Upcoming events include the holding of a Big Lunch at the Memorial Hall on Sunday 28th June.

You can find the group on the web at www.friendsofcatcliffe.org.uk, at their Facebook page, FriendsOfCatcliffe or on Twitter.



Uncontested Election Result - Catcliffe Parish Council

The Parish Council election for 7th May 2015 was uncontested. This means the following Councillors took up office on the 11th May and will form the Council until the next election in 2020:

Andrew Cater, 46 Georgian Mews, Catcliffe
andy@amusementcaterers.com, 07813 604971

Andy Roddison, 10 Flatts Lane, Treeton
andy.roddison@rotherham.gov.uk, 07957 209390

Tony Wilkinson, 81 High Hazel Crescent, Catcliffe
01709 376898

Darren Hughes, 27 Bluemans Way, Catcliffe
darren.hughes@darrenjhhughes.co.uk
07957 648423

Declan Healy, 77 High Hazel Crescent, Catcliffe
declan.healy@hotmail.co.uk, 07811 450626

Glenys Cooper, 89 Sheffield Lane, Catcliffe
glengarycoop2@fsmail.net, 01709 375435

Alternatively contact the Parish Council via :
Clerk to the Council, Angela Harrison,
catcliffecouncil@gmail.com, 07985 327377



Activities at the Catcliffe Memorial Hall

Why not visit the Catcliffe Memorial Hall and take part in the many different activities on offer there :-

Monday evenings

7.30pm to 9.00pm Scouts activities

Tuesday

6.00pm to 7.30pm Yoga class

On the second Tuesday bi-monthly, the Catcliffe Flood Committee meets at 7.00pm

Wednesday

7.00pm to 8.30pm Cubs activities

The Parish Council meetings take place on the first Wednesday of every month (except August) starting at 6.30pm

Thursday

7.00pm to 8.30pm Yoga class

Friday

Weight Watchers Friday 5.30-6.30pm

Sunday 6.30pm

Alternatively if you want to hire the Hall for your own one off event or a regular activity current fees are only £17 per hour for residents / £20 per hour non-residents for the Main Hall or £7 per hour for the meeting room. Check availability by contacting the Clerk at catcliffecouncil@gmail.com or on 07985 327377.

Casual Vacancies

We now have three casual vacancies. We would therefore like to hear from enthusiastic residents who would like to become involved in the tier of government closest to local people and play a central role in improving our local quality of life. The Council meets on the first Wednesday of the month.

If you wish to apply please contact the Clerk (details above) or write to Catcliffe Parish Council, Catcliffe Memorial Hall, Old School Lane, Catcliffe S60 5SP

Catcliffe Civic Service

Catcliffe Civic Service will be held on Sunday 28th June at St Marys Church from 6.00pm.

All Welcome with music by Steve Trotter.



Memorial Hall – Have Your Say!

Without renovation to a modern standard this facility would need to close. Members are aware that there are no cheap options.

The recently agreed preferred option is to keep the original building but demolish part of the hall and the two storey extension, which is in a very poor state of repair and currently unused. By reducing the size of the facility it is hoped that the remaining structure can be brought up to a higher standard and ongoing maintenance costs can be reduced. Significant funding in the region of £250,000 will still be required to undertake the work. Most of the costs of renovation are now budgeted for and therefore the Council is hoping not to make significant additional increases to the current council tax liability. However we need residents to let us know what they want from the hall in future. Please look at

the proposed design plan opposite and the impressions herein. Tell us what you think and if you'd like to see something different!

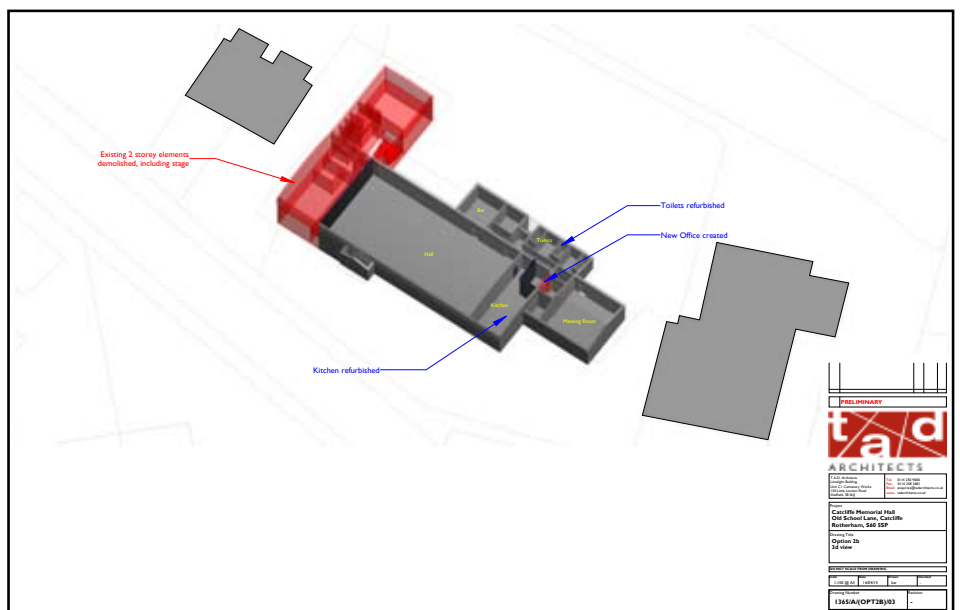
In particular please provide your comments. You can do this in several ways:

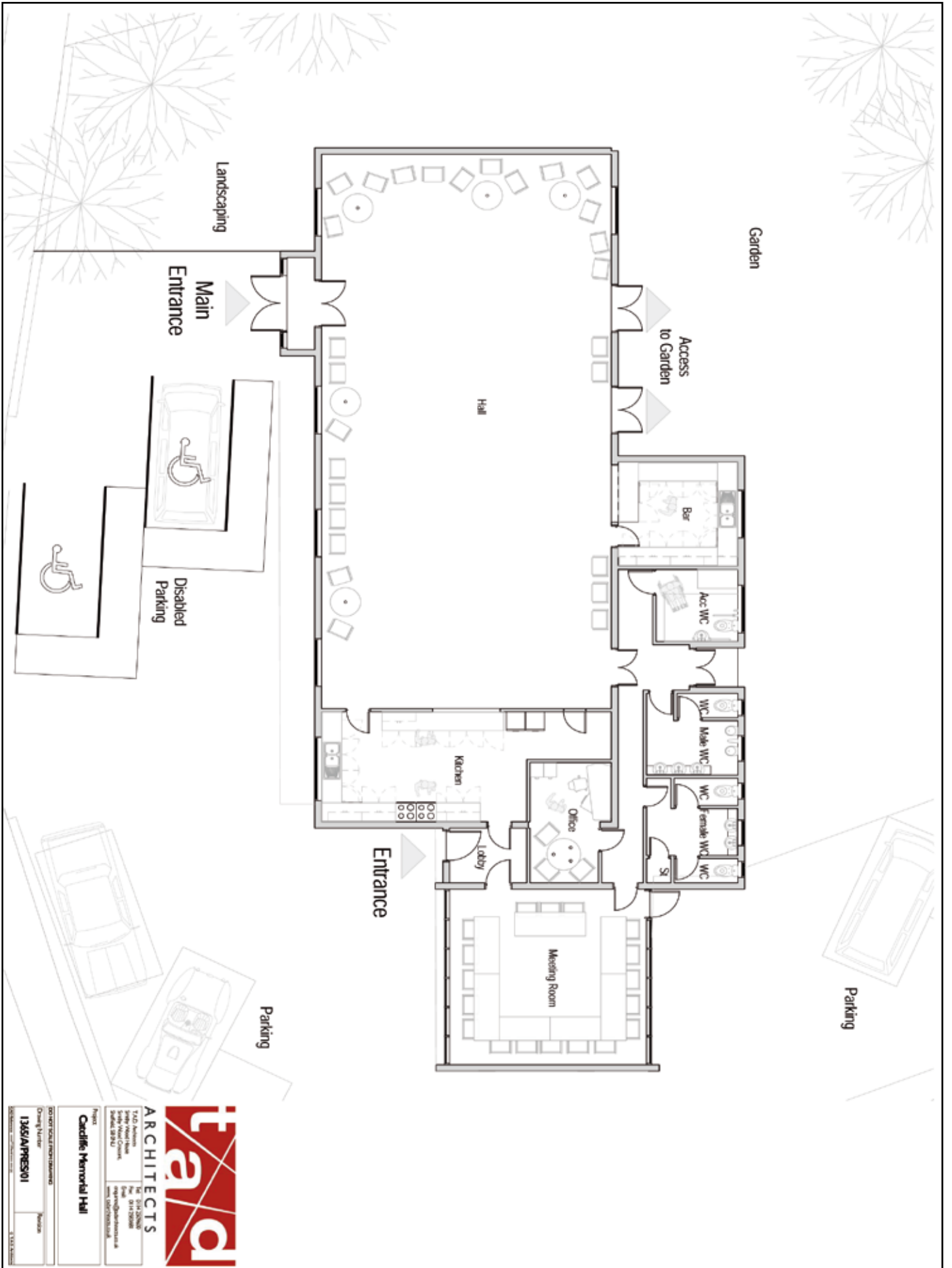
- Complete the survey online www.surveymonkey.com/s/GZM9JHJ

- Detach and return the survey on the back page to the Memorial Hall, Old School Lane Catcliffe S60 5SP

- Provide your comments in writing or email the Council at catcliffecouncil@gmail.com

The consultation will run for 6 weeks. Please provide your comments by 15th July 2015.







ARCHITECTS
 T.A.D. Architects
 Suite 1000
 1000 University Ave
 Seattle, WA 98101
 Tel: 206.461.1100
 Fax: 206.461.1101
 info@tadarchitects.com
 www.tadarchitects.com

Project
Cedille Memorial Hall


Client: TOWN OF SEATTLE
Design Number: 1365A/PRES01
Phase:





**G. E.
FOERS
& CO.**

Estd 1814




Diploma
Holder


**Independent Funeral Directors
& Memorial Consultants**

Personal Service from Philip Gray Dip.FD MBIFD


- 24 Hour Service
- Pre-paid Funeral Plans Available
- Floral Tributes



- Private Chapels of Rest
- Memorialisation
- Catering




N.A.M.M.
Installers



S.A.I.F.
INDEPENDENT
FUNERAL
DIRECTORS

1 Aughton Road
Swallownest
Sheffield
S26 4TF
0114 287 5202
(Memorial showroom)
www.gefoersfunerals.co.uk

**Golden
Charter** 
Funeral Plans

24 Station Road
Treeton
Rotherham
S60 5PN
01709 839 539
0114 269 2835

Weight Watchers

Come join us at the Memorial Hall, Old School Lane, Catcliffe either Fridays at 5.30pm or Sundays at 6.30pm and see all the success for yourselves. So far this year our members have lost over 670lbs and that's just since opening our doors in January!

So come let us help, guide and support you on the way to your goal. Here is just a couple of photos of our success...



If you would like any further information please contact either Angela Hall on 07811036910 or Nicky Dalton on 07757999801 we look forward to welcoming you to our friendly meetings.

Useful Contacts

Streetpride (RMBC):

01709 336003 (Report potholes, dog fouling, flytipping or faulty highways signs and street lights)

South Yorkshire Police: 101 (Non emergencies)

South Yorkshire Travel Transport Helpline:

01709 515151 (Information about public transport services)

Age UK Rotherham: 01709 835214 (Help for older people)

RMBC General Enquiries 01709 382121

RMBC Council Tax and Benefits 01709 336006

RMBC Adult Social Services 01709 822330

RMBC Children's Social Care 01709 823987

RMBC Housing Repairs and Enquiries 01709 336009

We're on the Web

www.catcliffeparishcouncil.com

Fashion show

in aid of
Cystic Fibrosis

Ladies and Childrens
Clothing

Catcliffe Memorial Hall
Old School Lane
Catcliffe
Rotherham
S60 5SP

Sat 6th June 2015
Starts At 2-30
£3 entry kids under 16 free

Bar - Tea - Coffee - Raffle

£3 per ticket, for tickets please contact
Ruth Palmer on 07795211162 or
Heather Palmer on 07748666241

www.complete-clothing.co.uk




Catcliffe Memorial Hall Restoration

Catcliffe Memorial Hall

1. The Parish Council is proposing to demolish part of the Memorial Hall and renovate the remainder. Do You Agree?

- Yes
- No

2. If you DO NOT agree with the Council’s proposal what changes to the Memorial Hall would you like to see?

- Demolish the building completely as not required
- Retain the building in its current condition
- Renovate all of the current building
- Demolish all the building and rebuild a new hall

3. If you support renovating the hall would this be dependent on there NOT being an increase to current Council Tax levels?

- Yes
- No
- It would depend on the amount of the increase
- Other (please specify)

4. Do you currently hire the hall or have you attended any events or regular classes at the hall in the last 2 years?

- Yes
- No

5. If the hall was renovated to a modern standard would you be more or less likely to attend or hire the hall?

- Much more likely
- A little more likely
- Neither more or less likely
- Less likely
- Much less likely

continued overleaf...

Catcliffe Memorial Hall Restoration

Catcliffe Memorial Hall

6. What types of activities would you like to see at the hall?

- Private events such as birthday or anniversaries
- Weddings
- Weekly classes such as yoga or weight watchers
- Educational events
- Charity events
- Community Events
- Other (please specify)

7. What types of activities would you participate in if they were available at the hall?

- Private events such as birthday or anniversaries
- Weddings
- Weekly classes such as yoga or weight watchers
- Educational events
- Charity events
- Community Events
- Other (please specify)

8. Are there any features at the hall you would like us to keep? eg. clock or stage

9. Do you have any other comments, questions, or concerns?