



South Yorkshire

POLICE

Local Policing Model

Briefing for partners

Corporate Communications

February 2015

INTRODUCTION

The people of South Yorkshire value highly visible, dedicated police teams and PCSOs (Police Community Support Officers) who know an area well. Communities feel safer and the police gain vital intelligence.

The Police and Crime Commissioner and Chief Constable understand that and consider it a priority. However, as government grant continues to fall year on year, ways have to be found of securing that commitment at less cost and with fewer staff. The new Local Policing Model aims to do that.

At the moment, uniformed police are organised in two teams: those who respond to incidents at any time of day or night; and safer neighbourhood police officers and PCSOs. By combining these into single Local Policing Teams (LPTs) and introducing some new technology, we can make substantial reductions in supervisory and other costs while maximising the commitment to neighbourhood policing and driving down crime.

The support, interaction and understanding of partner agencies is crucial to the successful implementation of the new model. Specific details are still being worked through but this document aims to answer your initial questions.

NEW OPERATING MODEL

South Yorkshire Police completed a detailed research process to identify a number of potential new operating models, looking at existing structures in similar forces as well as putting forward variations on the Force's current model. Some forces, for example, have resolved the problem of fewer resources by abandoning neighbourhood policing. The Police and Crime Commissioner did not consider that desirable.

Following consultation with staff associations and the South Yorkshire Police and Crime Commissioner, the Local Policing Model was agreed to come into operation in the Spring of 2015.

The reorganisation places neighbourhood policing at the heart of the Force's new model. The model aims to provide a consistent structure and standard of service across the county, reducing duplication to provide more efficient working practices.

Doncaster District will start the process and become the Force's first Local Policing Unit (LPU) in May 2015 followed by Barnsley in June, Sheffield in September and finally Rotherham in October 2015.

Local Policing Teams

The new model of policing will combine the response team and the neighbourhood team into one multi-skilled Local Policing Team (LPT) supported by PCSOs. All officers, whatever their previous function, will be required to have a neighbourhood focus.

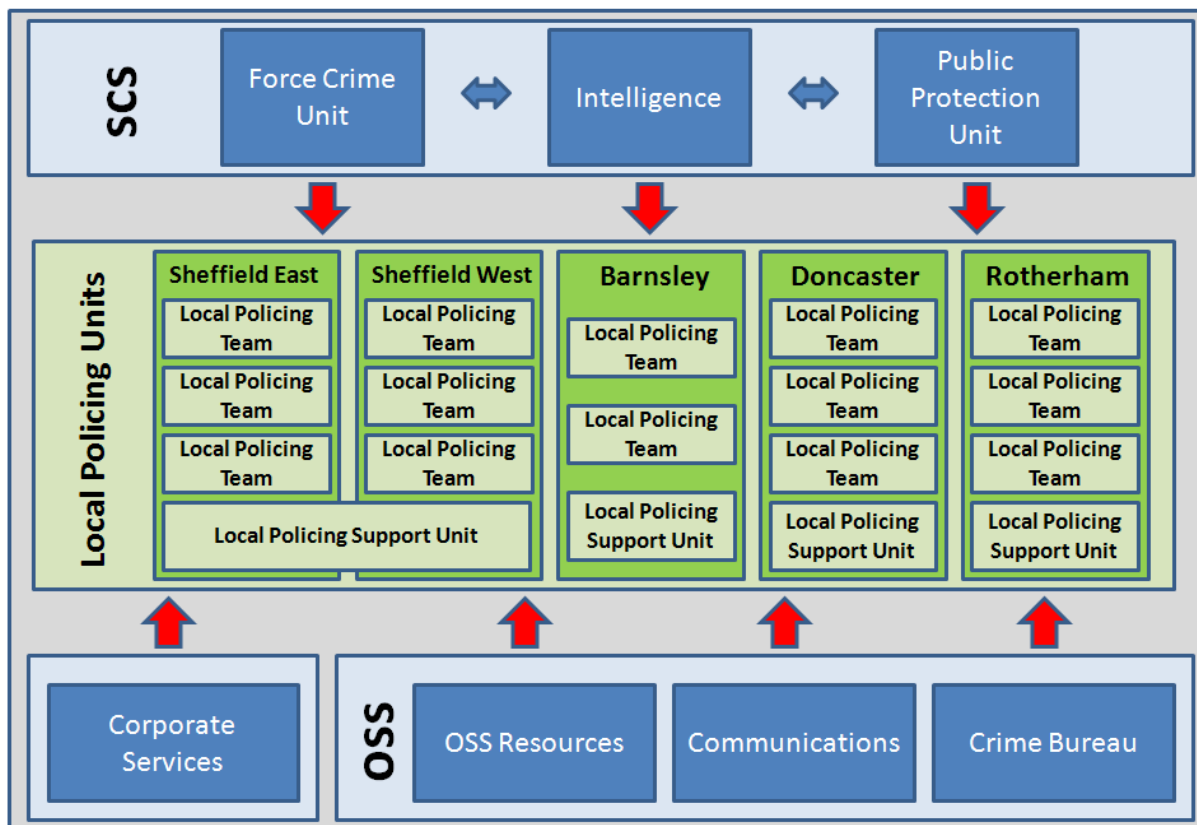
These teams will have responsibility to solve community problems and manage local demand, led by inspectors who will be the principal point of contact for elected members and partners. Most staff will start their shifts at team bases where they will be briefed together, saving duplication, then deployed straight out into the community.

Thanks to an investment from the Home Office Innovation Fund, officers are being provided with tablet computers that will enable them to work in the communities they serve for longer, thereby maximising their visibility and accessibility to members of the public. This means more time on the streets and much less time in buildings, irrespective of where officers are based.

Local Policing Team officers and PCSOs will receive assistance from their Local Support Hub, which will specialise in the proactive investigation of local crime, antisocial behaviour problem solving, children and schools related matters and offender management. These resources will support the whole district and will go where the need arises.

The teams will still enjoy specialist support from trained investigative officers for serious crime, and specialist operational resources such as Roads Policing, Tactical Support and Firearms Support.

Below is a structure diagram of the new Local Policing Model, which shows the support each Local Policing Unit will receive from specialist Force-wide resources:



Community contacts

Each geographical area will have a named inspector and dedicated PCSOs, who will be the main points of contact for local communities and partners. Multi-skilled police officers on duty 24 hours a day, 7 days a week, will support them across each of the new Local Policing Teams. It is recognised that our current safer neighbourhood staff have built up excellent relationships in their communities, and this knowledge and experience will be harnessed when solving community issues.

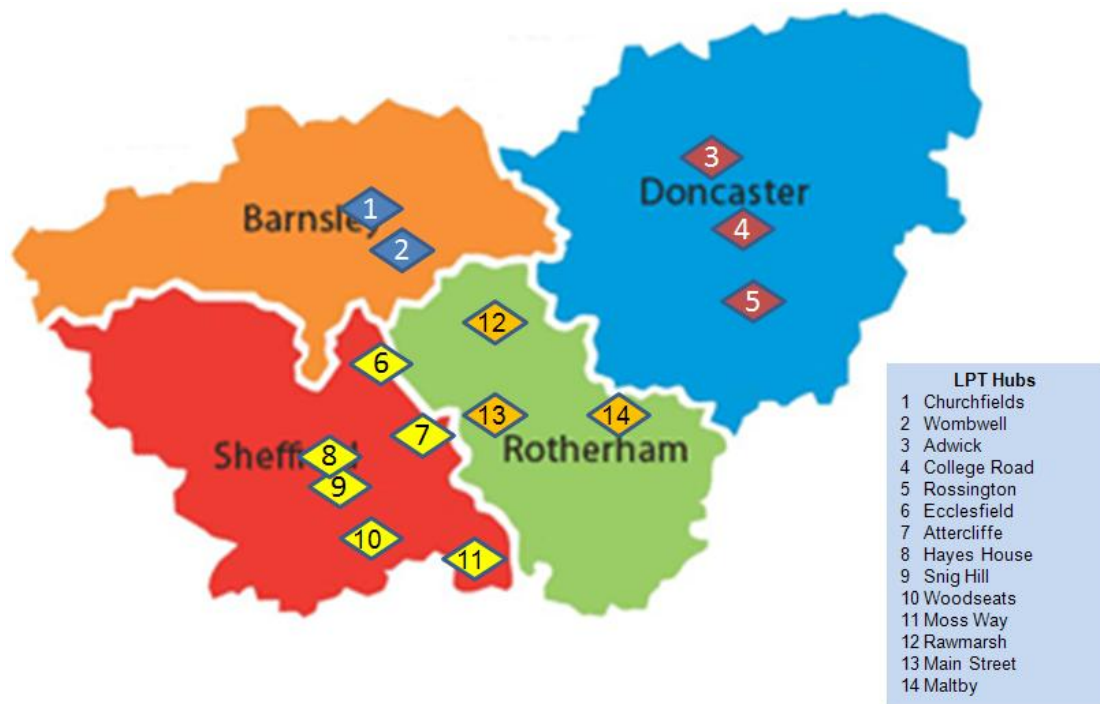
PCSOs will continue to serve beat areas within Local Policing Teams, providing a consistent presence for local people. One key objective of the new operating model is to require teams to take greater ownership of all issues that arise in their areas and to manage their resolution.

LPT bases

Police officers and PCSOs will continue to be based at numerous locations in the four new Local Policing Units.

Police officers will start their shifts at a Local Policing Team base before being deployed across their area. The locations of these bases (see below) take into consideration current demand profiles across the county. These are all existing police buildings, although Hayes House in Sheffield is an interim base pending a replacement building on the existing Hammerton Road site.

Barnsley	Doncaster	Rotherham	Sheffield East	Sheffield West
Churchfields Wombwell	College Road Adwick Rossington	Main Street Maltby (Joint with SYFR) Rawmarsh	Ecclesfield Attercliffe Moss Way	Snig Hill Woodseats Hayes House (interim)



In the new model, PCSOs will be based at a number of local ‘satellite’ police stations (see below) and some Local Policing Team bases. Again, these are all existing police buildings well known to local communities. Some of the smallest buildings across the Force are likely to close due to outdated facilities and details of these will be released once final decisions have been made.

Barnsley	Doncaster	Rotherham	Sheffield East	Sheffield West
Goldthorpe Penistone Commerce House	Thorne Stainforth Edlington Mexborough Doncaster Dome	Dinnington Brinsworth Wath-upon- Dearne	Meadowhall Elm Tree	Deepcar Crosspool

KEY QUESTIONS

What are the main differences between the current Safer Neighbourhood Areas and the new Local Policing Teams?

Local Policing Teams will have local responsibility for response (e.g. 999 calls) as well as neighbourhood issues. This will give local inspectors more flexibility to move resources daily to where there is most need – essential if there are fewer officers.

There will be 14 teams across South Yorkshire, which are broadly aligned to the existing Safer Neighbourhood Area boundaries. The LPT areas will not be subdivided into smaller teams but the communities served by the current Safer Neighbourhood Teams will have named contacts.

The current teams work different shift patterns in different areas of the county, providing limited resources at some times of the day. The new Local Policing Teams will give 24/7 resources for tackling local crime and antisocial behaviour issues.

PCSOs will be the main constant for local communities and partners, continuing to be based at existing police stations. There will be a greater emphasis on PCSOs in daily partnership working, while local inspectors will be the main contact for elected members and senior managers.

What is happening with existing meeting structures?

South Yorkshire Police is committed to working in partnership with communities, statutory agencies, emergency service colleagues, the voluntary/third sector and the business community but with fewer numbers, the new model will mean some changes to existing partnership structures.

Different people may attend or manage existing meetings but where possible the local inspector, their deputy, or the dedicated PCSOs will aim to provide consistency for local partners. Some meeting times may have to change depending on shift times and availability.

Inspectors will have the responsibility for overseeing the partnership structures in their area, ensuring that any relevant meetings and concerns are addressed in a suitable and timely manner.

How will I know whom to contact in my local team?

Contact details for each team will be published on the South Yorkshire Police website in advance of the new Local Policing Units going live in each area. This will include new Local Policing Team email addresses. A range of channels will be used to publicise when the information is live on the website.

Local staff will have the responsibility for making contact with key partners and community members within their area, and explaining how the new teams will operate.

New tablet devices will keep officers in the areas they serve for longer, enabling officers to respond quickly and effectively to questions from local people.

Members of the public and partners can also phone the Force's non-emergency number 101 at any time where their issue will either be dealt with immediately by a call handler or submitted for the attention of their Local Policing Team.

COMMUNICATION

South Yorkshire Police will publish further details about the new Local Policing Model on the Force's website and social media sites in advance of the staged implementation. This will explain the process that is taking place and provide reassurance about the changes to local policing services.

The Force's Corporate Communications team will liaise with colleagues from partner agencies throughout the process. SYP will consider media requests on a case-by-case basis and briefings will be given to staff in the event of direct questions from the public.

Further updates will be given to partners and direct to the public throughout the implementation process.

FURTHER INFORMATION

If you have a query about the new Local Policing Model, please contact your existing SNA inspector in the first instance. Their details are available via the 'Local police' section of the South Yorkshire Police website: www.southyorks.police.uk

Alternatively, please try one of the following people:

Chief Inspector Ian Roberts

Force change programme lead

0758 447 5325

ian.roberts@southyorks.pnn.police.uk

Adam Oxley

Senior Internal Engagement Officer

0774 779 0586

adam.oxley@southyorks.pnn.police.uk

GLOSSARY

CRB	Crime Bureau	LPT	Local Policing Team
OSS	Operational Support Services	LPU	Local Policing Unit
PPU	Public Protection Unit	SNA	Safer Neighbourhood Area
PCSO	Police Community Support Officer	SYP	South Yorkshire Police
LPM	Local Policing Model	SNT	Safer Neighbourhood Team